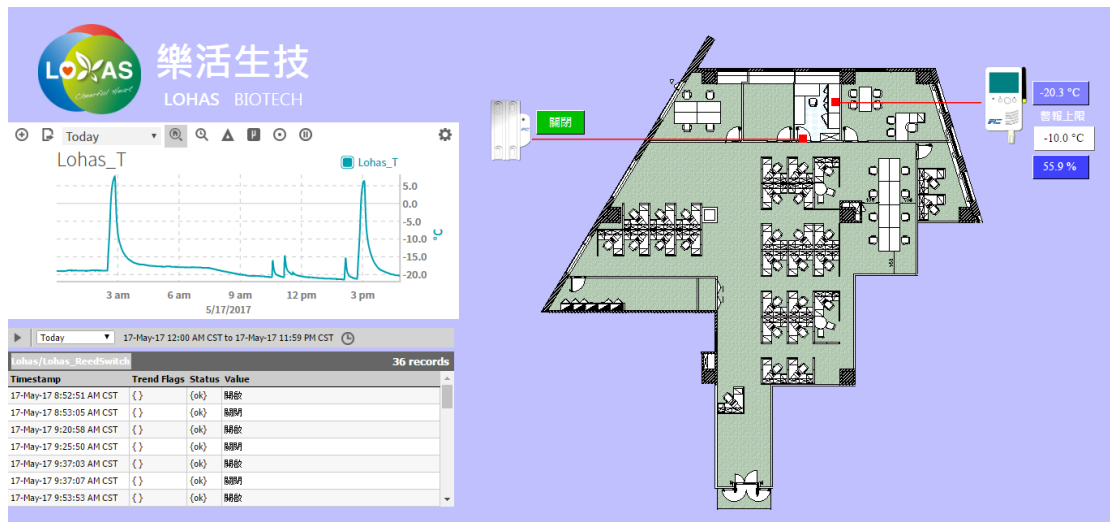


Case References:

LOHAS Monitoring and Control of Freezer Section

It will send a notification to the designated person's email box if the following conditions occur.

- If the temperature of the freezer is higher the -10°C
- People enter and leave the warehouse



Control Box JACE-8000 Monitoring Items

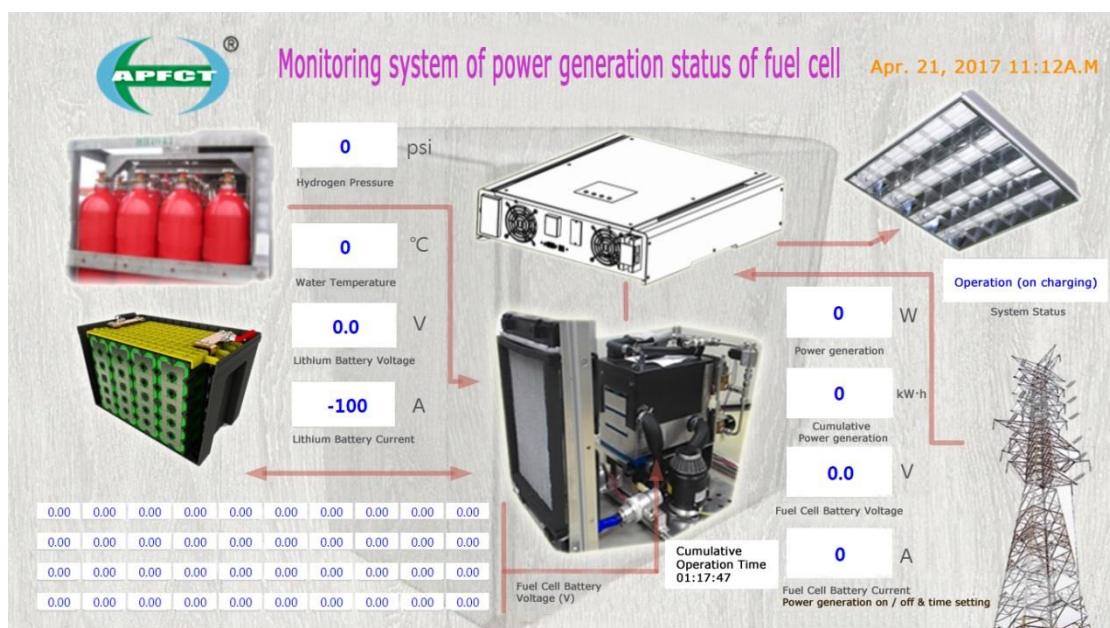
Communication: Zigbee

(Picture source: LOHAS)

APFCT Fuel Cell Monitoring System

Monitoring and control of power generation status of fuel cell

- When an abnormal condition occurs, notify the administrator immediately
- Weekly reports are sent to the designated manager email box



Control Box JACE-8000 Monitoring Items

Communication: Modbus RTU

(Picture source: APFCT)

Solar Power Monitoring System

Monitoring of solar power generation status

- When an abnormal condition occurs, notify the administrator immediately
- Daily reports are sent to the designated manager email box

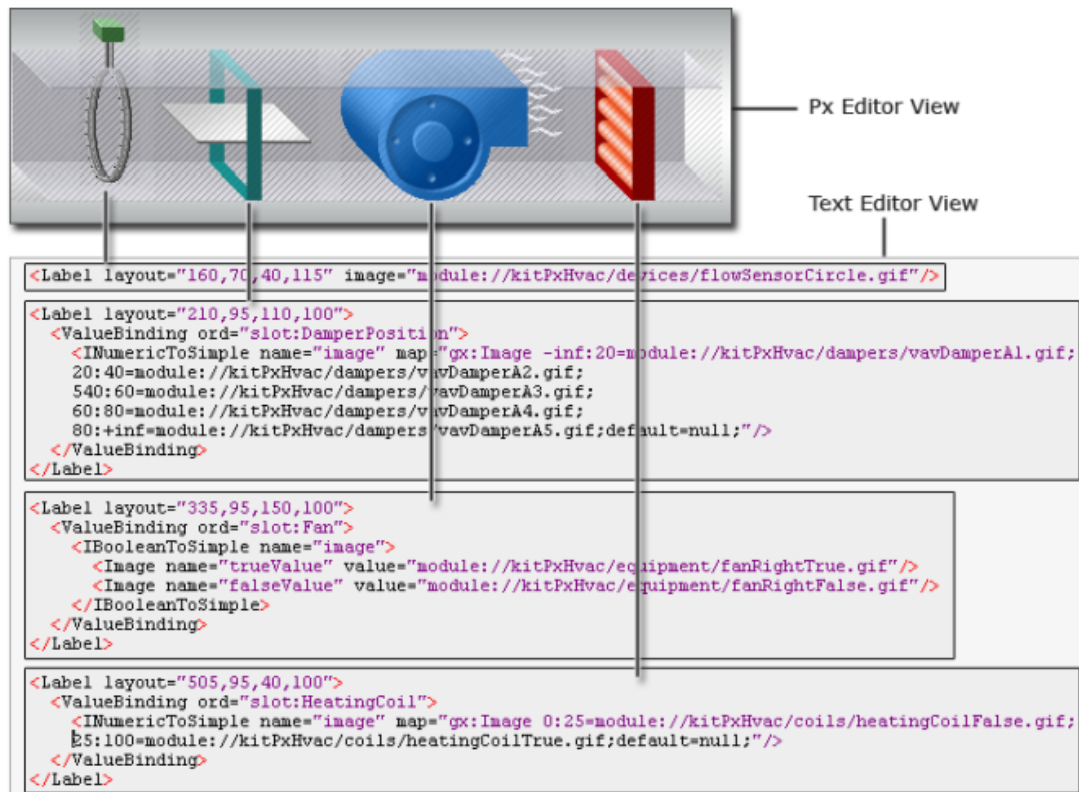


Control Box JACE-300E Monitoring Items

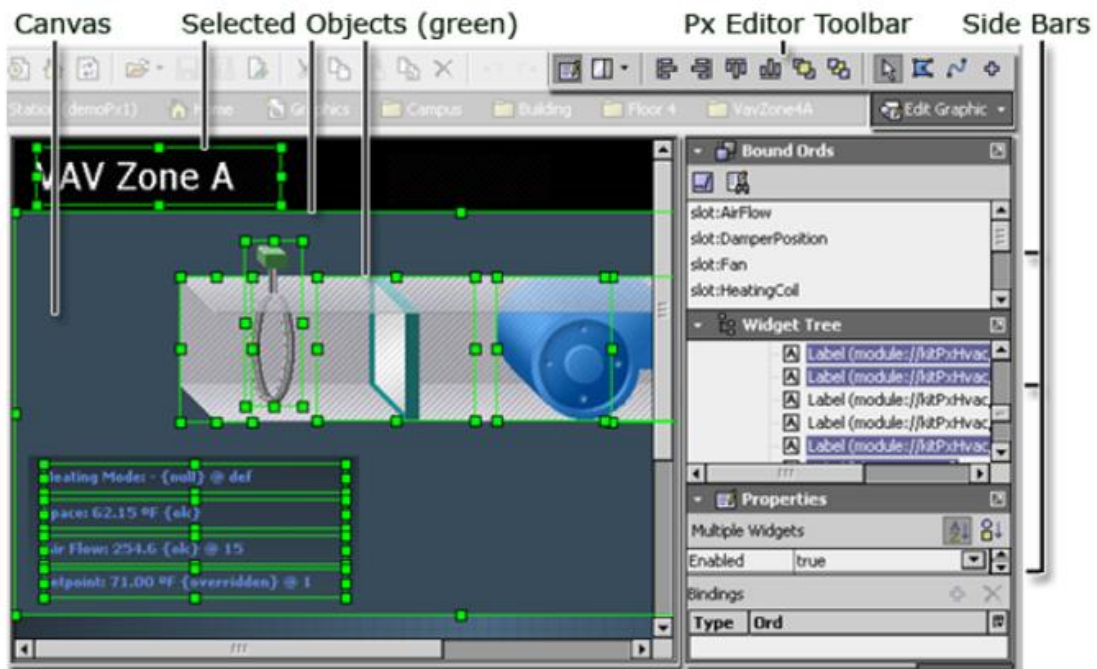
Communication: Modbus RTU

HVAC Monitoring System

- HVAC Duct Design Webpage
- The output / monitoring item can be quickly produced by dragging the icons

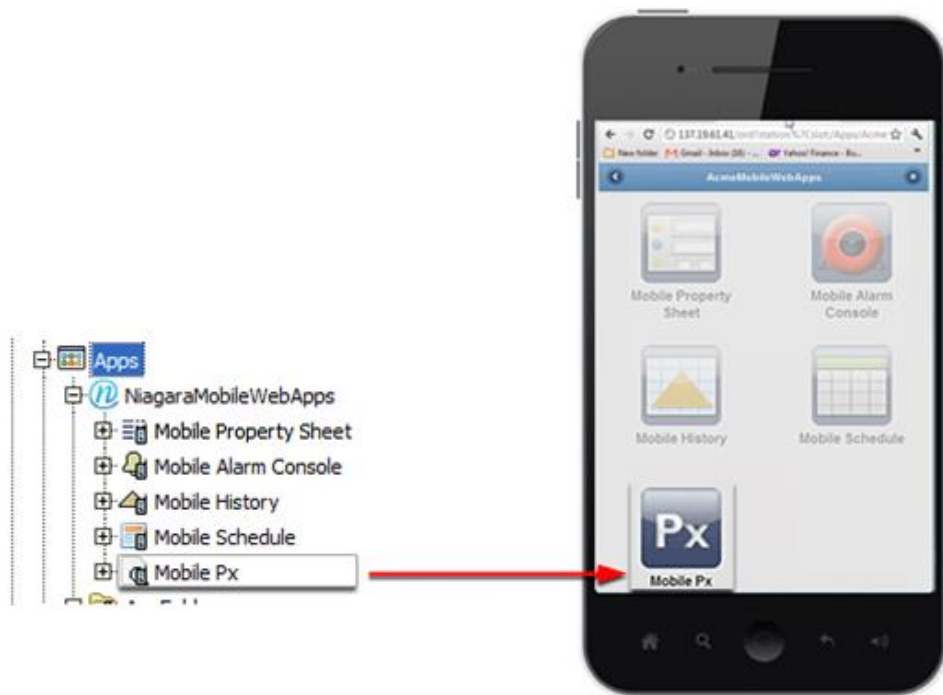


(Picture Source: Niagara Graphics Guide)



(Picture Source: Niagara Graphics Guide)

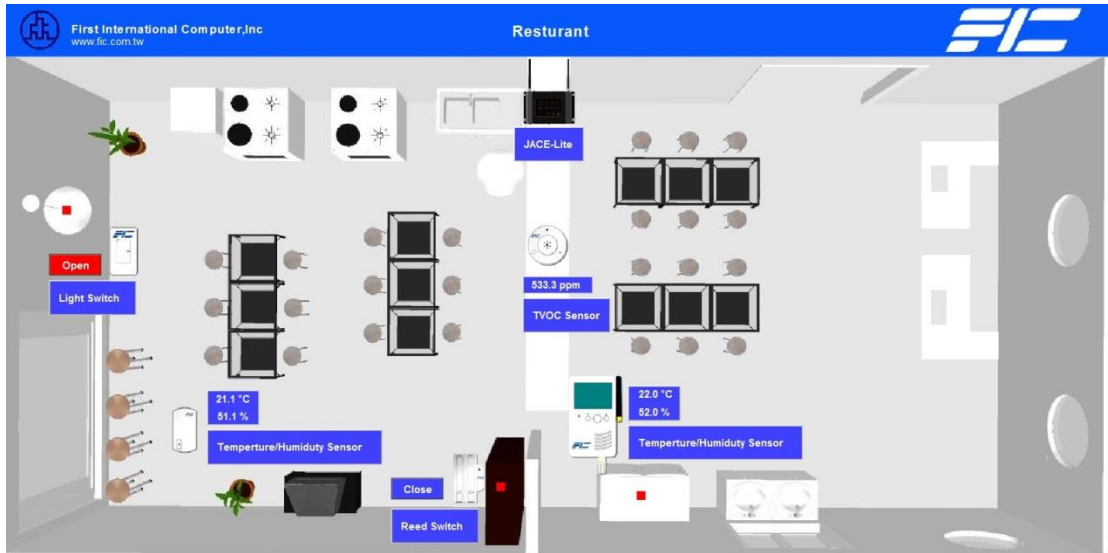
Mobile Px app in Workbench and Mobile Desktop view



(Picture Source: Niagara Graphics Guide)

Convenience Store Monitoring System

- Environmental CO2 detection, and it will send out a notification if more than 1000ppm is detected
- Temperature and humidity monitoring
- Door access monitoring



Control Box JACE-Lite Monitoring Items at Convenience Store
Communication: Zigbee